

 土木工程拓展署
Civil Engineering and
Development Department

Environmental Monitoring and Audit for Contaminated Mud Pit at Sha Chau (2009-2013) – Investigation Agreement No. CE 4/2009(EP)

32nd Monthly Progress Report for Contaminated Mud Pits at Sha Chau – February 2012

Revision 0

2 April 2012

Environmental Resources Management
21/F Lincoln House
Taikoo Place, 979 King's Road
Island East, Hong Kong
Telephone 2271 3000
Facsimile 2723 5660

www.erm.com





**Environmental Resources
Management**





21/F Lincoln House
979 King's Road
Taikoo Place
Island East
Hong Kong
Telephone: (852) 2271 3000
Facsimile: (852) 2723 5660
E-mail: post.hk@erm.com
http://www.erm.com

Environmental Monitoring and Audit for Contaminated Mud Pit at Sha Chau (2009-2013) – Investigation

32nd Monthly Progress Report for Contaminated Mud Pits at Sha Chau – February 2012

Revision 0

Document Code: 0103262 Monthly Report Feb 12_v0.doc

Client: Civil Engineering and Development Department (CEDD)		Project No: 0103262			
Summary: This document presents progress of monitoring works on contaminated mud pits at Sha Chau in February 2012 under Agreement No. CE 4/2009 (EP).		Date: 2 April 2012			
		Approved by:  <i>Dr Robin Kennish</i> Director			
0	32 nd Monthly Progress Report for CMP	CL	JT	RK	02/04/12
Revision	Description	By	Checked	Approved	Date
<p>This report has been prepared by Environmental Resources Management the trading name of 'ERM Hong-Kong, Limited', with all reasonable skill, care and diligence within the terms of the Contract with the client, incorporating our General Terms and Conditions of Business and taking account of the resources devoted to it by agreement with the client.</p> <p>We disclaim any responsibility to the client and others in respect of any matters outside the scope of the above.</p> <p>This report is confidential to the client and we accept no responsibility of whatsoever nature to third parties to whom this report, or any part thereof, is made known. Any such party relies on the report at their own risk.</p>		<p>Distribution</p> <p><input checked="" type="checkbox"/> Internal</p> <p><input checked="" type="checkbox"/> Public</p> <p><input type="checkbox"/> Confidential</p>			
		  			



CONTENTS

1.1	BACKGROUND	1
1.2	REPORTING PERIOD	1
1.3	DETAILS OF SAMPLING AND LABORATORY TESTING ACTIVITIES	1
1.4	DETAILS OF OUTSTANDING SAMPLING AND / OR ANALYSIS	2
1.5	BRIEF DISCUSSION OF THE MONITORING RESULTS	2
1.6	ACTIVITIES SCHEDULED FOR THE NEXT MONTH	3
1.7	STUDY PROGRAMME	3

ANNEXES

<i>Annex A</i>	<i>Sampling Schedule</i>
<i>Annex B</i>	<i>Monitoring Results</i>
<i>Annex C</i>	<i>Study Programme</i>

Agreement No. CE 4/2009 (EP)
Environmental Monitoring and Audit
for Contaminated Mud Pit at Sha Chau (2009-2013) - Investigation

32nd MONTHLY PROGRESS REPORT
FOR CONTAMINATED MUD PITS AT SHA CHAU
February 2012

1.1 BACKGROUND

Since 1992, the East of Sha Chau area has been the site of a series of dredged contaminated mud pits (CMPs) designed to provide confined marine disposal capacity for contaminated mud arising from the HKSAR's dredging and reclamation projects. In February 2012, the following works were being undertaken at the CMPs:

- On 10 February 2012, CMP IVc reached its capacity for the backfilling of contaminated mud. Capping was being undertaken at CMP IVc after it reached its capacity;
- Disposal of contaminated mud was taking place at CMP Va starting 10 February 2012; and
- The dredging of CMP Vc was in progress.

The environmental monitoring and audit (EM&A) programme for the CMPs at the East of Sha Chau area (ESC) presently covers capping operations at CMP IVc, disposal operations at CMP Va and dredging operations at CMP Vc.

1.2 REPORTING PERIOD

This *Monthly Progress Report* covers the monitoring period of February 2012.

1.3 DETAILS OF SAMPLING AND LABORATORY TESTING ACTIVITIES

The following monitoring activities have been undertaken for CMP IVc in February 2012:

- *Demersal Trawling* was conducted on 16, 17 February; and
- *Water Quality Monitoring during Capping* was conducted on 21 February.

The following monitoring activities have been undertaken for CMP V in February 2012:

- *Water Column Profiling* was conducted for CMP Va on 17 February;

- *Routine Water Quality Monitoring* was conducted for CMP Va on 21 February;
- *Impact Water Quality Monitoring during Dredging Operations* was conducted for CMP Vc on 22 February;
- *Sediment Toxicity Test* and *Cumulative Impact Sediment Chemistry* were conducted for CMP Va on 24 February; and
- *Pit Specific Sediment Chemistry* was conducted for CMP Va on 27 February.

A summary of field activities is presented in *Annex A*.

A summary of monitoring data submitted by the Contractor for this reporting month is presented in *Table 1.1*.

Table 1.1 *Summary of monitoring data submitted by the Contractor for the reporting month*

Key Task	Monitoring Component	Date of Results Received from the Contractor
CMP Vc Impact Monitoring during Dredging Operations	Water Quality	29 February 2012

1.4 *DETAILS OF OUTSTANDING SAMPLING AND / OR ANALYSIS*

No outstanding sampling and laboratory analysis remained from February 2012

1.5 *BRIEF DISCUSSION OF THE MONITORING RESULTS*

1.5.1 *CMP V*

Impact Water Quality Monitoring during Dredging Operations of CMP V – February 2012

Impact Water Quality Monitoring during Dredging Operations of CMP V was conducted on 22 February 2012 for CMP Vc. On the survey day, sampling was conducted during both mid-ebb and mid-flood tides at two Reference (Upstream) stations upstream and five Impact (Downstream) stations downstream of the dredging operations at CMP Vc (*Figure 1.1*). Monitoring was also conducted at the Ma Wan station. At each station, *in-situ* measurements of water quality parameters as well as water samples were taken from three depths in the water column (ie surface: 1 m below sea surface, mid-depth and bottom: 1 m above the seabed).

Monitoring results are presented in *Table B1* of *Annex B*. Levels of Dissolved Oxygen (DO), Turbidity and Total Suspended Solids (TSS) complied with the

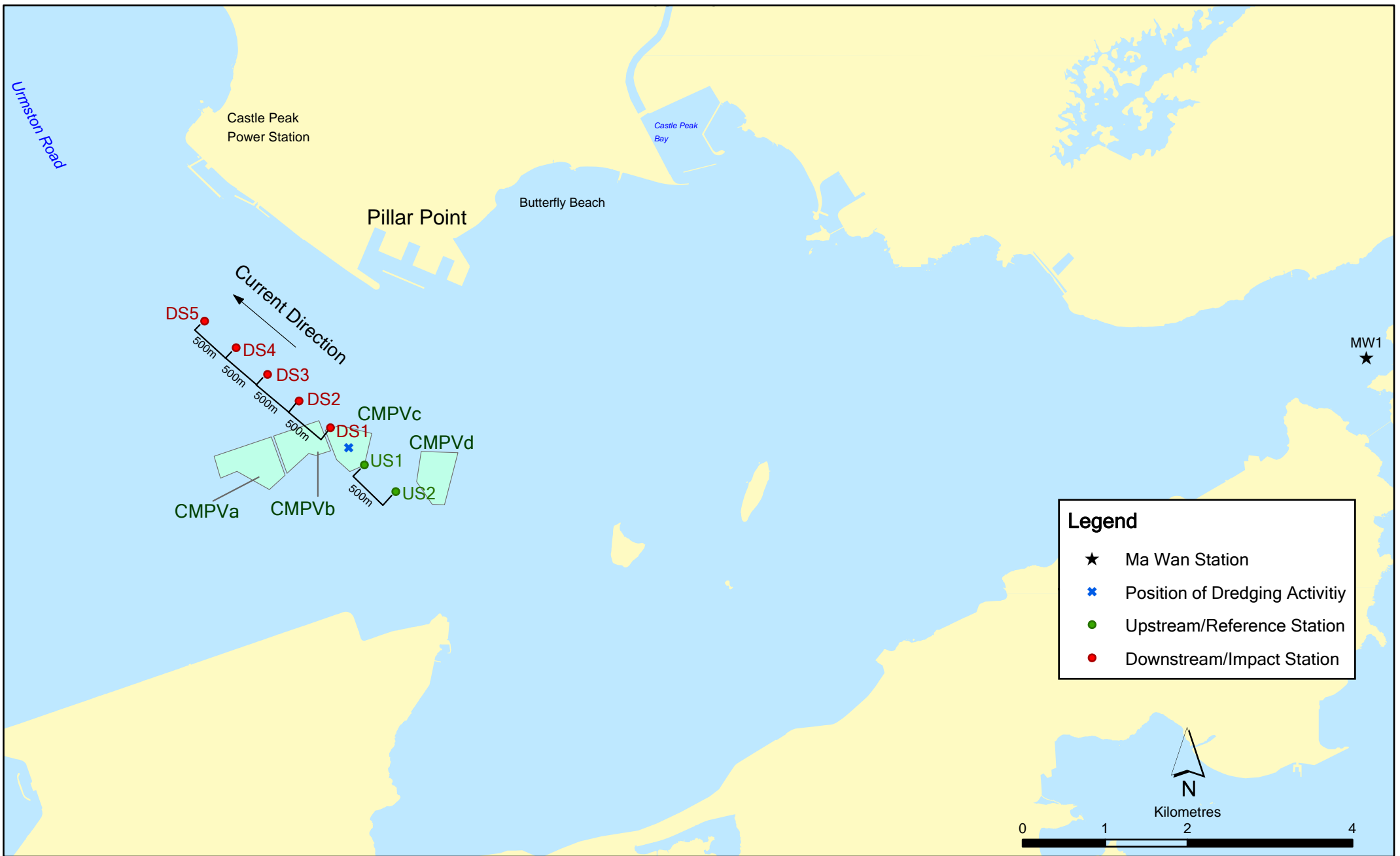


Figure 1.1

Indicative Dredging Impact Sampling Stations for CMPVc

Note: The locations of sampling stations will be determined on site based on current direction and position of dredging activities.

File: CMPV0103262_modelling stations2.mxd
Date: 27/03/2012

Environmental
Resources
Management



Action and Limit Levels set in the *Baseline Monitoring Report* ⁽¹⁾. Overall, the results indicated that the dredging operations at CMP Vc did not appear to cause any unacceptable deterioration in water quality during this reporting period.

Therefore, no further mitigation measures, except for those recommended in the Environmental Permit (*EP-312/2008*), are considered required for the dredging operations of CMP Vc.

1.6 *ACTIVITIES SCHEDULED FOR THE NEXT MONTH*

The following monitoring programmes will be conducted in the next monthly period of March 2012:

CMP V

- *Pit Specific Sediment Chemistry* for CMP Va;
- *Water Column Profiling* for CMP Va; and
- *Impact Water Quality Monitoring during Dredging Operations* for CMP Vc.

The sampling schedule is presented in *Annex A*.

1.7 *STUDY PROGRAMME*

A summary of the Study Programme is presented in *Annex C*.

(1) ERM (2009) *Baseline Monitoring Report. Environmental Monitoring and Audit for Contaminated Mud Pit at Sha Chau (2009-2013) – Investigation.* Agreement No. CE 4/2009(EP). Submitted to EPD in September 2009.

Annex A

Sampling Schedule

Annex A1 - East of Sha Chau Environmental Monitoring and Audit Sampling Schedule for CMP IV (January 2012 - December 2012)

			2012											
			J	F	M	A	M	J	J	A	S	O	N	D
Tissue/ Whole Body Sampling														
Near-Pit Stations	INA			*										
	INB			*										
Reference North	TNA			*										
	TNB			*										
Reference South	TSA			*										
	TSB			*										
Demersal Trawling														
Near Pit Stations	INA 1-5		*	*										
	INB 1-5		*	*										
Reference North	TNA 1-5		*	*										
	TNB 1-5		*	*										
Reference South	TSA 1-5		*	*										
	TSB 1-5		*	*										
Capping														
<i>Ebb Tide</i>														
Impact Station Downcurrent	IPE1		*					*		*				*
	IPE2		*					*		*				*
	IPE3		*					*		*				*
	IPE4		*					*		*				*
	PFC1		*					*		*				*
Intermediate Station Downcurrent	INE1		*					*		*				*
	INE2		*					*		*				*
	INE3		*					*		*				*
	INE4		*					*		*				*
	INE5		*					*		*				*
Reference Station Upcurrent	RFE1		*					*		*				*
	RFE2		*					*		*				*
	RFE3		*					*		*				*
	RFE4		*					*		*				*
	RFE5		*					*		*				*
<i>Flood Tide</i>														
Impact Station Downcurrent	INF1		*					*		*				*
	PFC2		*					*		*				*
	INF3		*					*		*				*
Intermediate Station Downcurrent	IPF1		*					*		*				*
	IPF2		*					*		*				*
	IPF3		*					*		*				*
Reference Station Upcurrent	RFF1		*					*		*				*
	RFF2		*					*		*				*
	RFF3		*					*		*				*
Water Column Profiling														
Plume Stations	WCP1		*											
	WCP2		*											

"*" = Number of replicates depends on field catch or parameters

Sampling completed
 Sampling to be completed

Annex B

Monitoring Results

Table B1 *Summary Table of DO, Turbidity and TSS Levels Recorded in February 2012*

Sampling Date	Tidal Period	Station	Average DO Levels (mg/L)		Average Turbidity Level (NTU)	Average TSS Level (mg/L)
			Bottom	Surface and Mid Depth		
2012/02/22	ME	DS1	7.63	7.64	15.10	19.50
		DS2	7.60	7.64	21.50	31.00
		DS3	7.61	7.64	15.80	23.70
		DS4	7.63	7.65	12.20	19.50
		DS5	7.69	7.70	9.80	11.80
		MW1	7.28	7.32	6.40	7.70
		US1	7.62	7.63	11.20	12.50
	MF	US2	7.61	7.64	7.00	9.20
		DS1	7.56	7.58	19.80	27.20
		DS2	7.56	7.54	23.10	32.80
		DS3	7.50	7.50	15.60	20.00
		DS4	7.44	7.45	19.70	27.30
		DS5	7.41	7.46	11.20	16.50
		MW1	7.42	7.46	7.70	11.33
		US1	7.65	7.62	15.00	22.70
		US2	7.63	7.63	18.50	28.17

Notes:

1. Cell shaded yellow indicated value exceeding the Action Level criteria.
2. Cell shaded red indicated value exceeding the Limit Level criteria.
3. DO for Surface and Mid-depth: less than 3.76 mg L⁻¹ (Action Level); less than 3.11 mg L⁻¹ (Limit Level)
 DO for Bottom: less than 2.96 mg L⁻¹ (Action Level); less than 2 mg L⁻¹ (Limit Level)
 Depth-average Turbidity: greater than 28.14 NTU (Action Level); greater than 38.32 NTU (Limit Level)
 Depth-average SS: greater than 37.88 mg L⁻¹ (Action Level); greater than 61.92 mg L⁻¹ (Limit Level)

Annex C

Study Programme

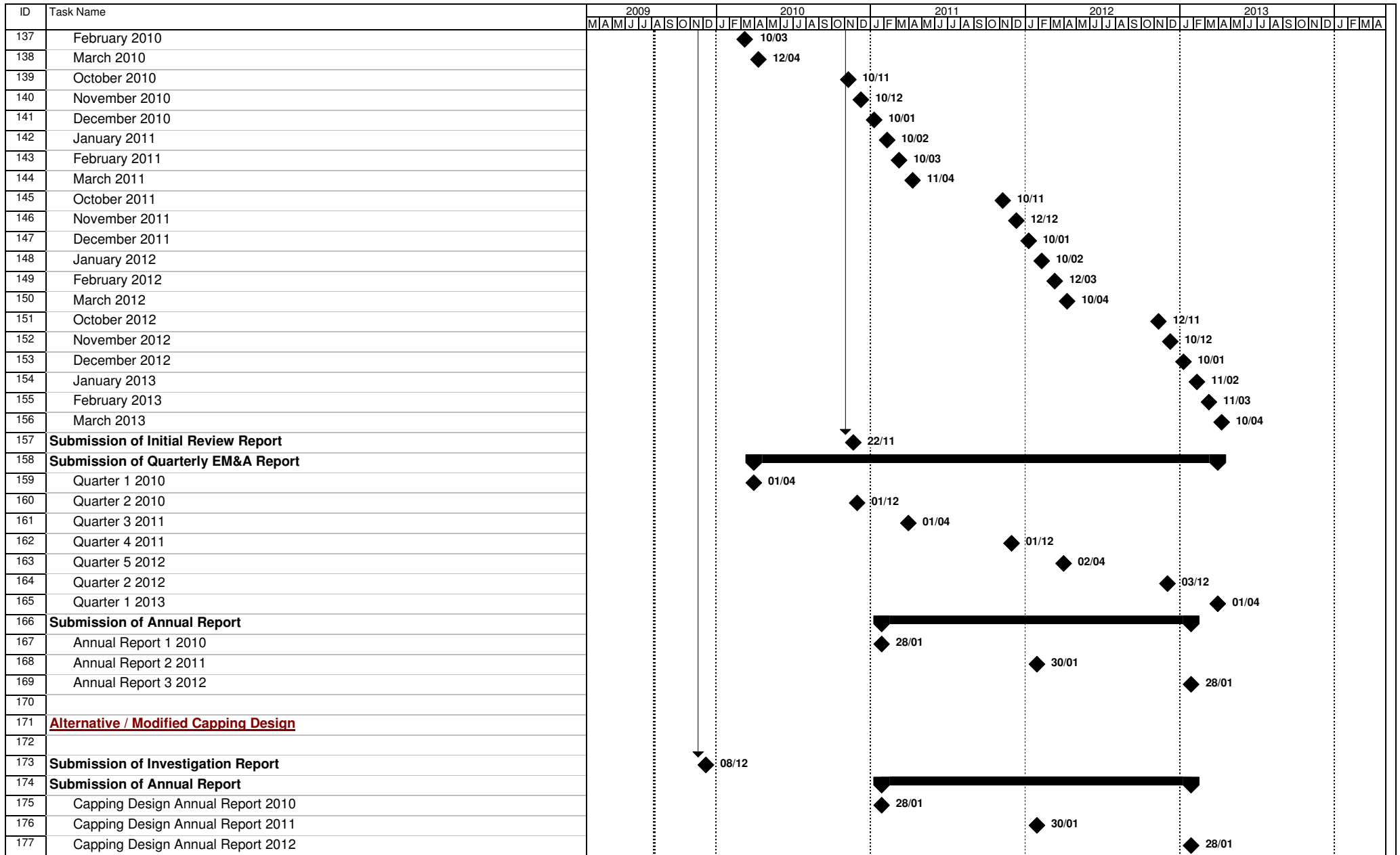


Figure 4.1 - Study Programme



ERM has over 100 offices

**Across the following
countries worldwide**

Argentina	Malaysia
Australia	Mexico
Azerbaijan	The Netherlands
Belgium	New Zealand
Brazil	Peru
Canada	Poland
Chile	Portugal
China	Puerto Rico
Colombia	Russia
Ecuador	Singapore
France	South Africa
Germany	Spain
Hong Kong	Taiwan
Hungary	Thailand
India	UK
Indonesia	US
Ireland	Vietnam
Italy	
Japan	
Kazakhstan	
Korea	

ERM's Hong Kong Office

**21/F Lincoln House
Taikoo Place, 979 King's Road
Island East, Hong Kong
T: 2271 3000
F: 2723 5660**

www.erm.com